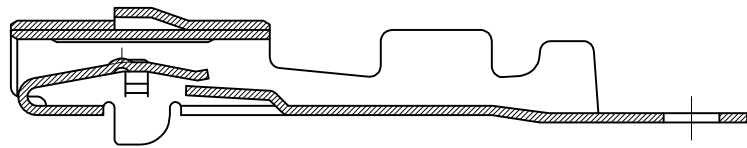
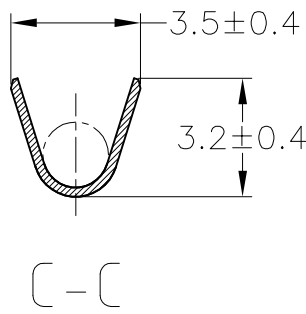
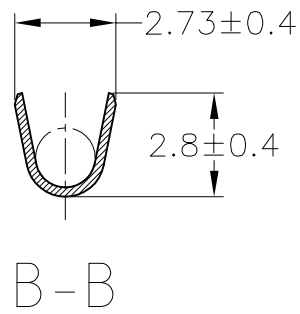
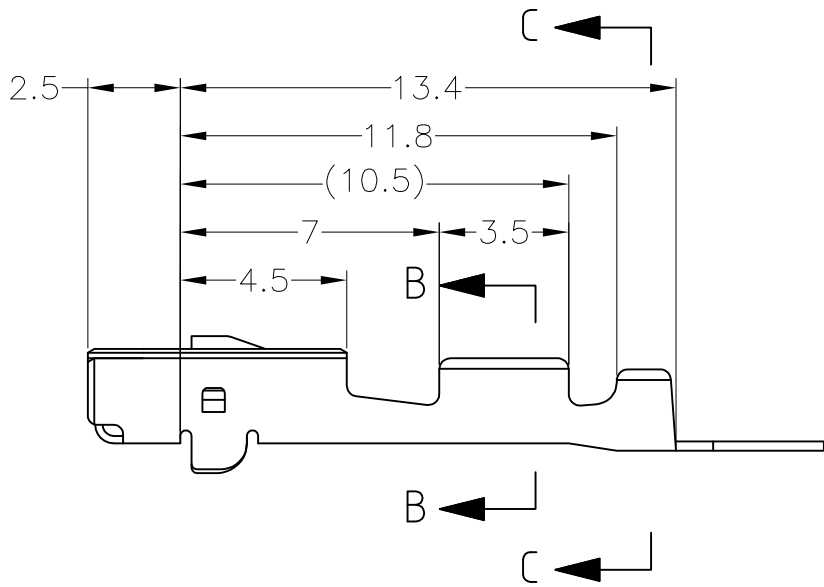
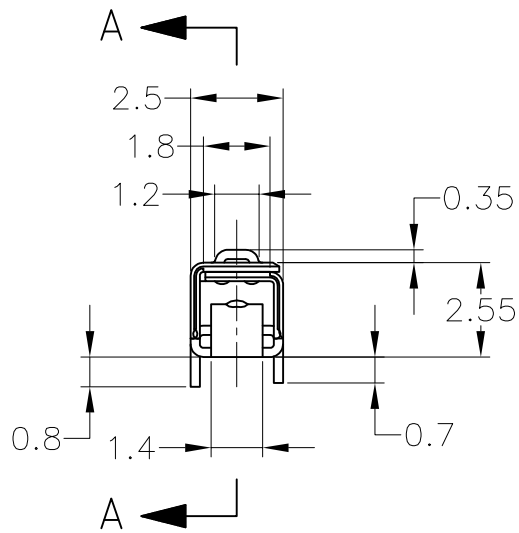
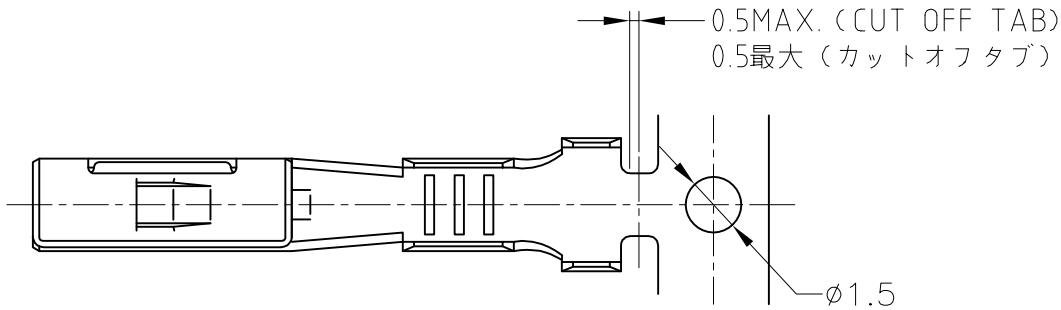


LOC	DIST	REVISIONS				
J	—	P	LTR	DESCRIPTION	DATE	DWN
			F3	REVISED	ECR-15-009698	26JUN2015
					TS	HY




A-A

1. APPLICATION SPEC NO. 114-5160

1. 取付適用規格番号 114-5160

抱合電線断面積 (WIRE RANGE) 0.56~1.29 mm <sup>2</sup> (AWG#20-#16)	被覆外径 (INSULATION DIA.) 1.8~2.6 mmφ
---	---------------------------------------

TOLERANCES UNLESS OTHERWISE SPECIFIED:	
一般公差	
10 ≥	: ±0.2
30 ≥ > 10	: ±0.25
100 ≥ > 30	: ±0.3
ANGLE	: ±3°

THIS DRAWING IS A CONTROLLED DOCUMENT.		DWN T.SHINOHARA 05JUL2012	 TE Connectivity		
DIMENSIONS: mm		CHK K.BETSUI 05JUL2012			
TOLERANCES UNLESS OTHERWISE SPECIFIED:		APVD K.BETSUI 05JUL2012	NAME		
0 PLC ± - 1 PLC ± - 2 PLC ± - 3 PLC ± - 4 PLC ± - ANGLES ± -		PRODUCT SPEC —	070II SERIES M RECEPTACLE CONTACT		
MATERIAL SEE TABLE		APPLICATION SPEC SEE NOTE	SIZE A3	CAGE CODE 00779	DRAWING NO C-175269
FINISH SEE TABLE		WEIGHT 0.33 g	RESTRICTED TO —		
CUSTOMER DRAWING			SCALE 5:1	SHEET 1 of 1	REV F3

# Mouser Electronics

Authorized Distributor

Click to View Pricing, Inventory, Delivery & Lifecycle Information:

[TE Connectivity:](#)

[175269-1](#) [175269-1 \(Mouser Reel\)](#) [175269-1 \(Cut Strip\)](#) [175269-1 \(Loose Piece\)](#)