

CUSTOMER TERMINAL	RoHS	LEAD(Pb)-FREE
Sn96%, Ag4%	Yes	Yes

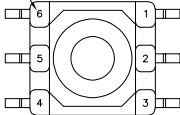
more than you expect



ELECTRICAL SPECIFICATIONS @ 25°C unless otherwise noted:

PARAMETER	TEST CONDITIONS	VALUE
D.C. RESISTANCE	1-3 @20°C	0.31 ohms max.
D.C. RESISTANCE	6-4 @20°C	0.33 ohms max.
INDUCTANCE	1-3 10kHz, 100mVAC, Ls	475uH min.
INTERWINDING CAPACITANCE	1-6 100kHz, 10mVAC, Cs	15pF typ.
DIELECTRIC	1-6 3125VAC, 1 second	2500VAC, 1 minute
URNS RATIO	(6-4):(1-3)	1.1:1, ±2%

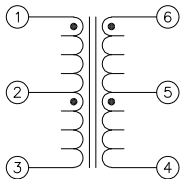
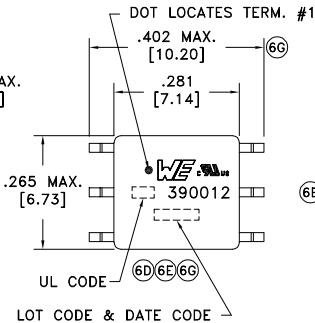
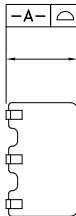
TERM. NO.'s FOR REF. ONLY



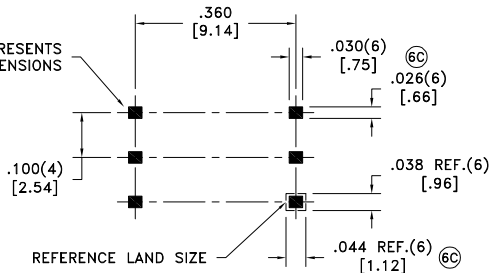
6G

-A- .004[.10]

.165 MAX.  
[4.19]



AREA REPRESENTS  
TERMINAL PAD DIMENSIONS



CUSTOMER TO DETERMINE LAND LAYOUT

GENERAL SPECIFICATIONS:

- OPERATING TEMPERATURE RANGE: -40°C to +125°C including temp rise.
- CURRENT RATING: 350mAAC
- VOLTAGE-TIME: 11VuS
- Designed to comply with the following requirements as defined by IEC60950-1, EN60950-1, UL60950-1/CSA60950-1 and AS/NZS60950.1:
  - Functional insulation for a primary circuit at a working voltage of 400Vrms.
- Qualified to AEC-Q200.

Wire insulation & RoHS status not affected by wire color.  
Wire insulation color may vary depending on availability.

6D

AGENCY NUMBER	
UL CODE FILE# E205930	CH
UL60950-1	E205930
CSA60950-1 (Via CUL)	E205930

REV.	DATE	Packaging Specifications
6H	4/21	Method: Tape & Reel
6G	12/20	PKG-0895
6F	6/18	www.we-online.com/midcom
6E	6/16	SEE REVISION SHEET FOR REVISION LEVEL



CONVENTION PLACEMENT

Tolerances unless otherwise specified:  
Angles: ±1°  
Fractions: ±1/64  
Decimals: ±.005  
Footprint: ±.005

This drawing is dual dimensioned. Dimensions in brackets are in millimeters.

DRAWING TITLE

TRANSFORMER

eiSos p/n: 760390012



PART NO.

760390012

SPECIFICATION SHEET 1 OF 1

# Mouser Electronics

Authorized Distributor

Click to View Pricing, Inventory, Delivery & Lifecycle Information:

[Wurth Elektronik:](#)

[760390012](#)