

# PTS641 Series SMT Top Actuated Switches

Tactile Switches

B



## Features/Benefits

- 6.3 x 6.3 mm footprint
- Multiple heights
- Ground pin option

## Typical Applications

- Metering
- White goods
- Home and garden equipment

### Specification

**FUNCTION:** Momentary action  
**CONTACT ARRANGEMENT:** 1 make contact = SPST N.O.  
**TERMINALS:** G type for SMT

### Mechanical

**TRAVEL:** 0.20 mm ±0.15 mm for 160 & 250 gf  
 0.30 mm ±0.15 mm for 320 gf  
**OPERATING LIFE:** 200,000 cycles for 160 gf version  
 100,000 cycles for 250 gf & 320 gf versions  
**OPERATION FORCE:** 160 gf ±50 gf blue actuator  
 250 gf ±50 gf red actuator  
 320 gf ±80 gf black actuator

### Packaging

Switches in reels of 1,500 pieces.  
 Dimensions of reels according to EIA 481B  
 External diameter 330 mm

### Electrical

**MAXIMUM VOLTAGE:** 12 VDC  
**MAXIMUM CURRENT DC:** 50 mA  
**DIELECTRIC STRENGTH:** 250 VA C (1mn)  
**CONTACT RESISTANCE:** 100 m Ω  
**INSULATION RESISTANCE:** ≥ 100 M Ω  
**BOUNCE TIME:** < 5 ms

### Environmental

**OPERATING TEMPERATURE:** -20°C to 85°C

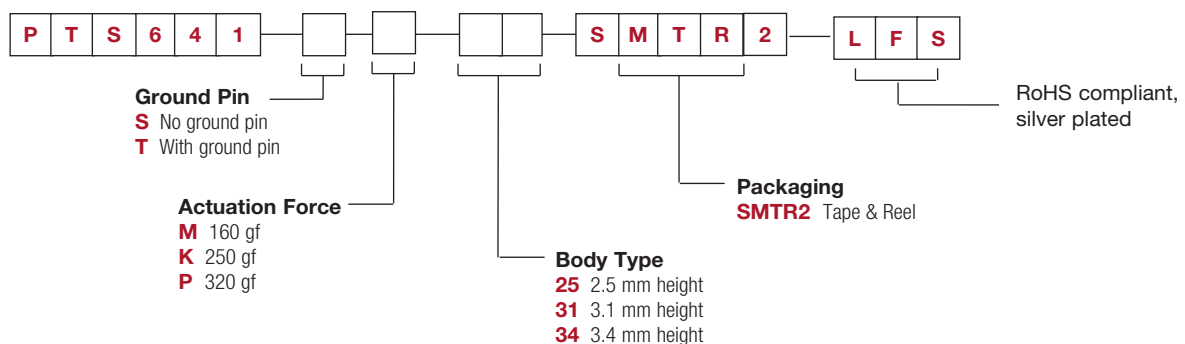
### Process

**SOLDERING:** This component is suited to the following methods:  
 Infrared Reflow Soldering in accordance with IEC61760-1

**NOTE:** Specifications listed above are for switches with standard options.  
 For information on specific and custom switches, consult Customer Service Center.

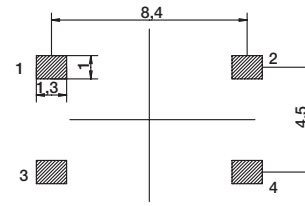
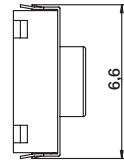
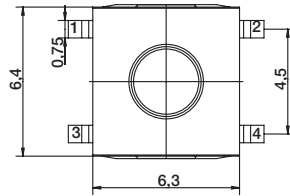
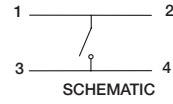
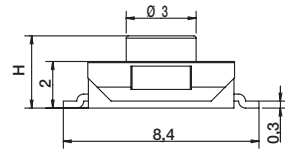
## How To Order

Our easy build-a-switch concept allows you to mix and match options to create the switch you need. To order, select desired option from each category and and place it in the appropriate box.



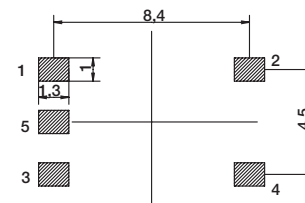
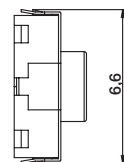
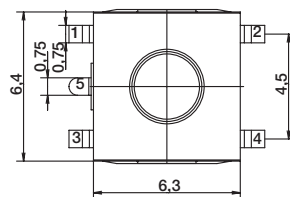
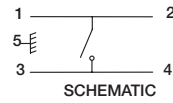
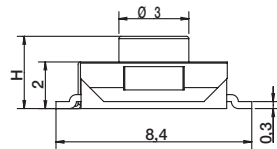
# PTS641 Series SMT Top Actuated Switches

**NO GROUND PIN** H = 2.5, 3.1, or 3.4 mm



RECOMMENDED PCB LAYOUT

**GROUND PIN** H = 2.5, 3.1, or 3.4 mm



RECOMMENDED PCB LAYOUT

B  
Tactile Switches

# Mouser Electronics

Authorized Distributor

Click to View Pricing, Inventory, Delivery & Lifecycle Information:

## C&K Switches:

[PTS641SK25SMTR2LFS](#) [PTS641SM31SMTR2LFS](#) [PTS641SK31SMTR2LFS](#) [PTS641TM34SMTR2LFS](#)  
[PTS641SP25SMTR2LFS](#) [PTS641TK31SMTR2LFS](#) [PTS641TP31SMTR2LFS](#) [PTS641SP31SMTR2LFS](#)  
[PTS641SP34SMTR2LFS](#) [PTS641SM34SMTR2LFS](#) [PTS641TM25SMTR2LFS](#) [PTS641SK34SMTR2LFS](#)