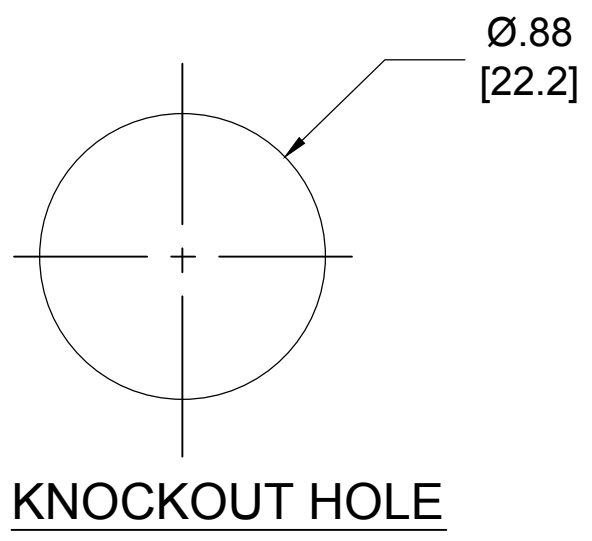


MALE FACE VIEW

1	GREEN-YELLOW
2	BLACK
3	WHITE

WIRING DIAGRAM



KNOCKOUT HOLE

PART LEGEND

1R3006A20A060

wire type
16 AWG
PVC

wire length
060 = 6 Inches
120 = 12 Inches

- NOTES:
- 1. MATERIAL: AS NOTED
 - 2. FINISH: AS NOTED
 - 3. ELECTRICAL:
VOLTAGE; 600V AC/DC
CURRENT: 13
 - 4. TEMP RATING: -20° TO +105°C
 - 5. PROTECTION: IP67 (WHEN MATED)
 - 6. ALL DIMS ARE FOR REFERENCE
UNLESS NOTED OTHERWISE

C

TABLE

6	LABEL	VINYL	BLACK/YELLOW
5	POTTING	EPOXY	
4	WIRE, 16 AWG, UL 1015	PVC INSUL.	SEE FACE VIEW
3	CONTACT PIN	Cu ALLOY	GOLD PLATED
2	INSERT	PVC	YELLOW
1	RECEPTACLE SHELL	ZINC DIE-CAST	BLACK E-COAT
ITEM	COMPONENT	MATERIAL	FINISH

38 WAS .3, UPDATED DOC

EC NO: IPG2017-0513

DRWN: RSTONE 11/18/16

CH'KD: M ZIELIN 2016/12/07

APPR: BWOODMAN

C

DESCRIPTION

REV

QUALITY SYMBOL

▽=0

▽C=0

GENERAL TOLERANCES (UNLESS SPECIFIED)

	mm	INCH
4 PLACES	±---	±---
3 PLACES	±---	±---
2 PLACES	±0.13	±.01
1 PLACE	±0.3	±---

ANGULAR ±---°

DRAFT WHERE APPLICABLE MUST REMAIN WITHIN DIMENSIONS

DIMENSION STYLE

IN/MM

DRAWN BY	DATE
GGUSTAFS	2013/12/03
CHECKED BY	DATE
LH	2009/04/01
APPROVED BY	DATE
----	----
MATERIAL NO.	---

SIZE

C

THIS DRAWING CONTAINS INFORMATION THAT IS PROPRIETARY TO MOLEX INCORPORATED AND SHOULD NOT BE USED WITHOUT WRITTEN PERMISSION

SCALE

NTS

DESIGN UNITS

INCH

THIRD ANGLE PROJECTION

MINI-CHANGE RECEPTACLE
3 POLE MALE
1/2 NPT 16/1 AWG PVC

MOLEX INCORPORATED

DOCUMENT NO.

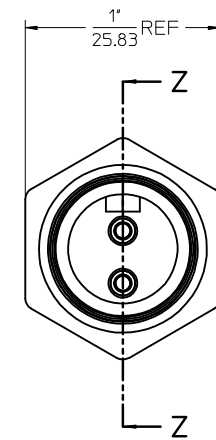
SD-130013-003

SHEET NO.

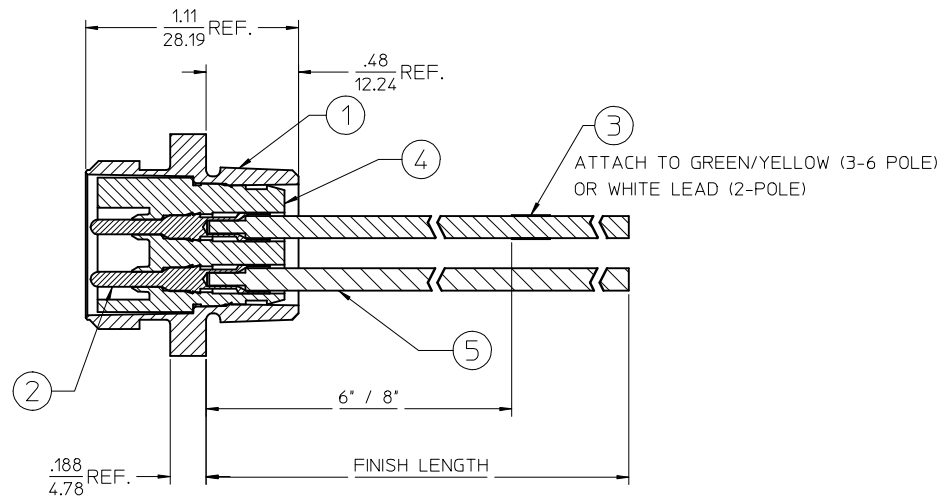
1 OF 1

FACE VIEW - MALE INSERT SCALE 2 : 1

1 WHITE 2 BLACK	1 GREEN/YELLOW 2 BLACK 3 WHITE	1 BLACK 2 WHITE 3 RED 4 GREEN/YELLOW	1 WHITE 2 RED 3 GREEN/YELLOW 4 ORANGE 5 BLACK	1 WHITE 2 RED 3 GREEN/YELLOW 4 ORANGE 5 BLACK 6 BLUE



MALE INSERT - FRONT VIEW



SECTION Z-Z

FINAL ASSEMBLY
1300130076

ENTER DESCRIPTION EC NO: WNA2010-0057 DRAWN BY: NKUMAR01 CHKD: JFMURPHY APPR: JFMURPHY DATE: 2009/07/31 DATE: 2009/08/10	DESCRIPTION	QUALITY SYMBOLS <div>▽=0</div> <div>▽=0</div>	GENERAL TOLERANCES (UNLESS SPECIFIED)		DIMENSION STYLE IN/MM		SCALE 2:1	DESIGN UNITS INCH	THIRD ANGLE PROJECTION			
				mm	INCH	DRAWN BY NKUMAR01	DATE 31/07/09	TITLE MC 2P MR 12IN. 16/1 PVC				
			4 PLACES	± ---	± ---	CHECKED BY BWOODMAN	DATE 31/07/09					
			3 PLACES	± ---	± ---	APPROVED BY JFMURPHY		DATE 31/07/09	MOLEX MOLEX INCORPORATED			
			2 PLACES	± ---	± ---							
1 PLACE	± ---	± ---	ANGULAR ±1/2°		MATERIAL NO. 9999999999	DOCUMENT NO. SD-130013-076	SHEET NO. 1 OF 2					
A	REV		DRAFT WHERE APPLICABLE MUST REMAIN WITHIN DIMENSIONS			THIS DRAWING CONTAINS INFORMATION THAT IS PROPRIETARY TO MOLEX INCORPORATED AND SHOULD NOT BE USED WITHOUT WRITTEN PERMISSION						

J

I

H

G

F

E

D

C

B

A

J

I

H

G

F

E

D

C

B

A

MALE RECEPTACLE ASSEMBLY				
2 POLE	3 POLE	4 POLE	5 POLE	6 POLE
QUANTITY				
1	1	1	1	1
2	3	4	5	6
1	1	1	1	1
1				
	1			
		1		
			1	
				1
1	1	1	1	1
				1
	1	1	1	1
			1	1
		1	1	1
1	1	1	1	1

Sl. No.	DESCRIPTION	MATERIAL	FINISH
1	RECEPTACLE SHELL	ZINC DIECAST	BLACK E-COAT
2	PIN CONTACT 16AWG	COPPER ALLOY	GOLD PLATED
3	LABEL	PLASTIC FILM	BLACK/YELLOW
4	2P MALE INSERT PVC A SIZE	PVC	YELLOW
	3P MALE INSERT PVC A SIZE	PVC	YELLOW
	4P MALE INSERT PVC A SIZE	PVC	YELLOW
	5P MALE INSERT PVC A SIZE	PVC	YELLOW
	6P MALE INSERT PVC A SIZE	PVC	YELLOW
5	#16-1 WHT PVC WIRE UL1015	PVC JACKET	WHITE
	#16-1 RED PVC WIRE UL1015	PVC JACKET	RED
	#16-1 ORN PVC WIRE UL1015	PVC JACKET	ORANGE
	#16-1 GRN/YEL PVC WIRE UL1015	PVC JACKET	GREEN/YELLOW
	#16-1 BLU PVC WIRE UL1015	PVC JACKET	BLUE
	#16-1 BLK PVC WIRE UL1015	PVC JACKET	BLACK

POLE COUNT	MAX. VOLTAGE RATING	MAX. CURRENT RATING
2 POLE	600 VOLTS	13 AMPS
3 POLE	600 VOLTS	13 AMPS
4 POLE	600 VOLTS	10 AMPS
5 POLE	600 VOLTS	8 AMPS
6 POLE	600 VOLTS	8 AMPS

PART NUMBER	DESCRIPTION	FINISHED LENGTH
1300130076	1R2006A20A120	12.0" +.75" -0 [0.3M +19.1MM -0]
1300130084	1R2006A20F060	6.0' +2.19" -0 [1.8M +55.6MM -0]
1300130202	1R3006A20A120	12.0" +.75" -0 [0.3M +19.1MM -0]
1300130215	1R3006A20F060	6.0' +2.19" -0 [1.8M +55.6MM -0]
1300130353	1R4006A20A120	12.0" +.75" -0 [0.3M +19.1MM -0]
1300130361	1R4006A20F060	6.0' +2.19" -0 [1.8M +55.6MM -0]
1300130493	1R5006A20A120	12.0" +.75" -0 [0.3M +19.1MM -0]
1300130503	1R5006A20F060	6.0' +2.19" -0 [1.8M +55.6MM -0]
1300130593	1R6006A20A120	12.0" +.75" -0 [0.3M +19.1MM -0]
1300130605	1R6006A20F060	6.0' +2.19" -0 [1.8M +55.6MM -0]

ENTER DESCRIPTION
EC NO: WNA2010-0057
DRAWN BY: NKUMAR01 2009/07/31
CHKD: JF
APPR: JFMURPHY 2009/08/10

REV
A

QUALITY SYMBOLS
▽=0
▽=0

DESCRIPTION
REV

GENERAL TOLERANCES (UNLESS SPECIFIED)
mm INCH
4 PLACES ± --- ± ---
3 PLACES ± --- ± ---
2 PLACES ± --- ± ---
1 PLACE ± --- ± ---
ANGULAR ±1/2°
DRAFT WHERE APPLICABLE
MUST REMAIN WITHIN DIMENSIONS

DIMENSION STYLE
IN/MM
DRAWN BY: NKUMAR01
CHECKED BY: BWOODMAN
APPROVED BY: JFMURPHY
DATE: 31/07/09
DATE: 31/07/09
DATE: 31/07/09

SCALE
2:1
TITLE
MC 2P MR 12IN.
16/1 PVC

THIRD ANGLE PROJECTION

MOLEX INCORPORATED

SD-130013-076

MATERIAL NO.
9999999999

DOCUMENT NO.
SD-130013-076

SHEET NO.
2 OF 2

SIZE
C

THIS DRAWING CONTAINS INFORMATION THAT IS PROPRIETARY TO MOLEX INCORPORATED AND SHOULD NOT BE USED WITHOUT WRITTEN PERMISSION

tb_frame_C_P_AM_T
Rev. E 2006/04/15

12

11

10

9

8

7

6

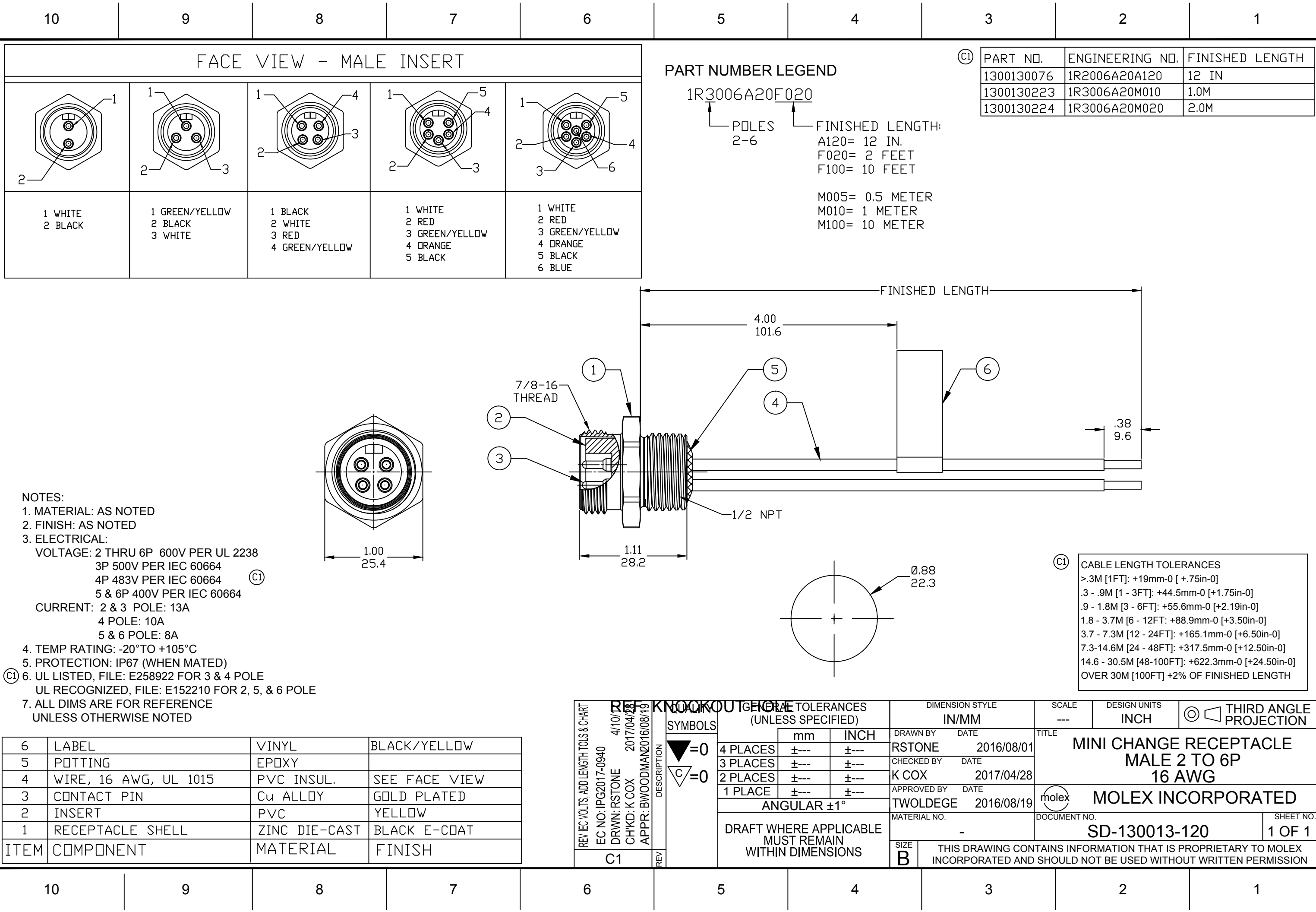
5

4

3

2

1



F

E

D

C

B

A

F

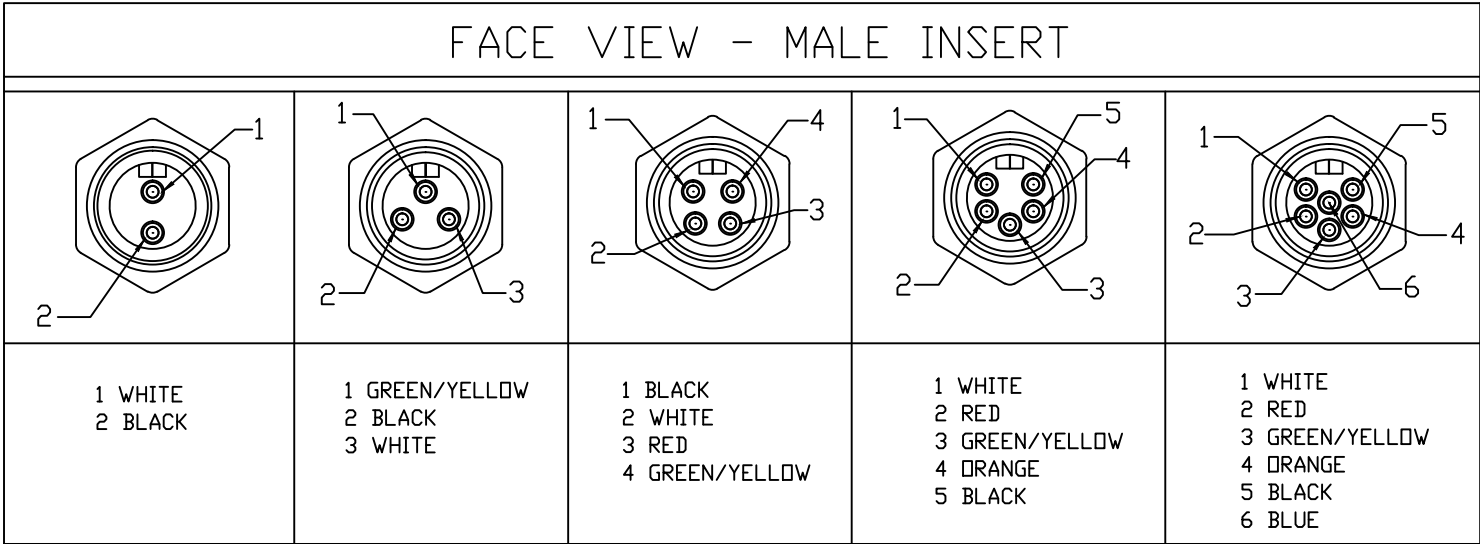
E

D

C

B

A



PART NUMBER LEGEND

1R3006A20F020

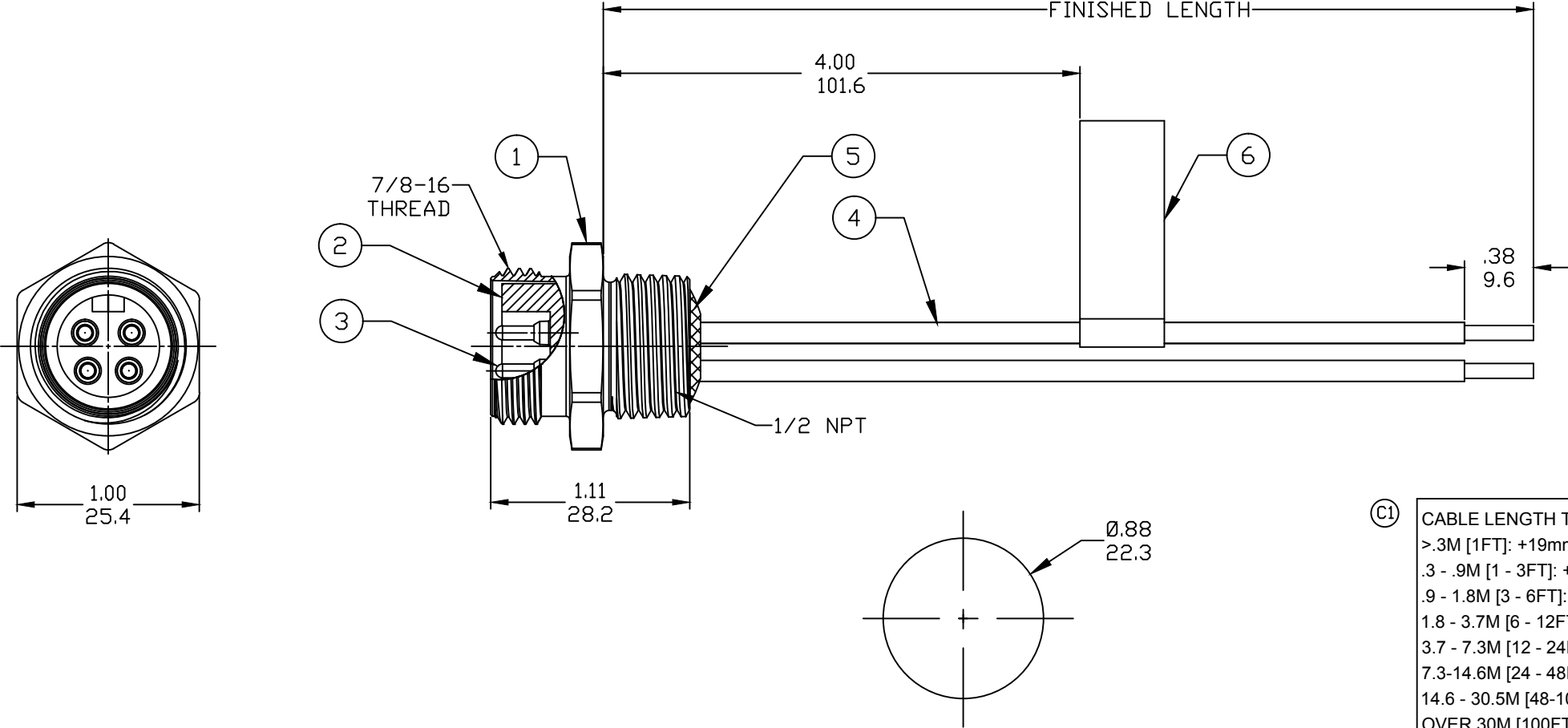
POLES 2-6

FINISHED LENGTH:
A120= 12 IN.
F020= 2 FEET
F100= 10 FEET

M005= 0.5 METER
M010= 1 METER
M100= 10 METER


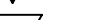
PART NO.	ENGINEERING NO.	FINISHED LENGTH
1300130076	1R2006A20A120	12 IN
1300130223	1R3006A20M010	1.0M
1300130224	1R3006A20M020	2.0M

- NOTES:
1. MATERIAL: AS NOTED
 2. FINISH: AS NOTED
 3. ELECTRICAL:
VOLTAGE: 2 THRU 6P 600V PER UL 2238
3P 500V PER IEC 60664
4P 483V PER IEC 60664
5 & 6P 400V PER IEC 60664
CURRENT: 2 & 3 POLE: 13A
4 POLE: 10A
5 & 6 POLE: 8A
 4. TEMP RATING: -20°TO +105°C
 5. PROTECTION: IP67 (WHEN MATED)
 6. UL LISTED, FILE: E258922 FOR 3 & 4 POLE
UL RECOGNIZED, FILE: E152210 FOR 2, 5, & 6 POLE
 7. ALL DIMS ARE FOR REFERENCE
UNLESS OTHERWISE NOTED



CABLE LENGTH TOLERANCES
>.3M [1FT]: +19mm-0 [+ .75in-0]
.3 - .9M [1 - 3FT]: +44.5mm-0 [+1.75in-0]
.9 - 1.8M [3 - 6FT]: +55.6mm-0 [+2.19in-0]
1.8 - 3.7M [6 - 12FT]: +88.9mm-0 [+3.50in-0]
3.7 - 7.3M [12 - 24FT]: +165.1mm-0 [+6.50in-0]
7.3-14.6M [24 - 48FT]: +317.5mm-0 [+12.50in-0]
14.6 - 30.5M [48-100FT]: +622.3mm-0 [+24.50in-0]
OVER 30M [100FT] +2% OF FINISHED LENGTH

6	LABEL	VINYL	BLACK/YELLOW
5	POTTING	EPOXY	
4	WIRE, 16 AWG, UL 1015	PVC INSUL.	SEE FACE VIEW
3	CONTACT PIN	Cu ALLOY	GOLD PLATED
2	INSERT	PVC	YELLOW
1	RECEPTACLE SHELL	ZINC DIE-CAST	BLACK E-COAT
ITEM	COMPONENT	MATERIAL	FINISH

REV	DESCRIPTION	TOLERANCES (UNLESS SPECIFIED)			DIMENSION STYLE IN/MM		SCALE ---	DESIGN UNITS INCH	THIRD ANGLE PROJECTION			
		 =0  =0		mm	INCH	DRAWN BY DATE RSTONE 2016/08/01		TITLE MINI CHANGE RECEPTACLE MALE 2 TO 6P 16 AWG				
			4 PLACES	±---	±---	CHECKED BY DATE K COX 2017/04/28						
			3 PLACES	±---	±---	APPROVED BY DATE TWOEDGE 2016/08/19						
			2 PLACES	±---	±---	MATERIAL NO. -		DOCUMENT NO. SD-130013-120		SHEET NO. 1 OF 1		
			1 PLACE	±---	±---							
		ANGULAR ±1°			DRAFT WHERE APPLICABLE MUST REMAIN WITHIN DIMENSIONS		SIZE B		THIS DRAWING CONTAINS INFORMATION THAT IS PROPRIETARY TO MOLEX INCORPORATED AND SHOULD NOT BE USED WITHOUT WRITTEN PERMISSION			

Mouser Electronics

Authorized Distributor

Click to View Pricing, Inventory, Delivery & Lifecycle Information:

Molex:

1300130202