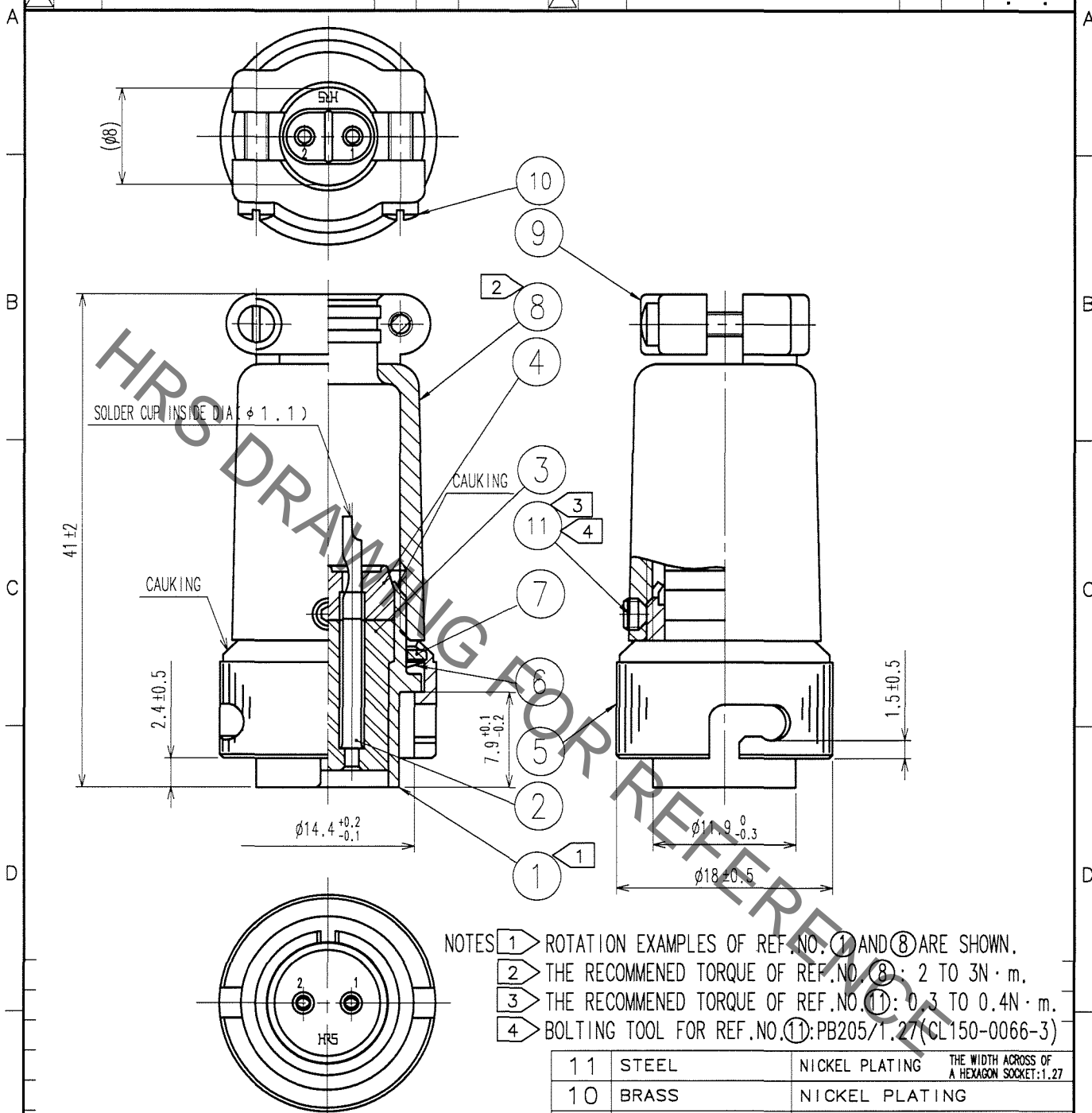


| 1 | | | | | 2 | | | | | 3 | | | | | 4 | | | | |
|-------|--------------------------|--|--|--|----|------|------|--|--|-------|--------------------------|--|--|--|----|------|------|--|--|
| COUNT | DESCRIPTION OF REVISIONS | | | | BY | CHKD | DATE | | | COUNT | DESCRIPTION OF REVISIONS | | | | BY | CHKD | DATE | | |
| △ | | | | | | | | | | △ | | | | | | | | | |
| △ | | | | | | | | | | △ | | | | | | | | | |
| △ | | | | | | | | | | △ | | | | | | | | | |



- NOTES 1 ROTATION EXAMPLES OF REF. NO. ① AND ⑧ ARE SHOWN.
2 THE RECOMMENDED TORQUE OF REF. NO. ⑧: 2 TO 3N · m.
3 THE RECOMMENDED TORQUE OF REF. NO. ⑪: 0.3 TO 0.4N · m.
4 BOLTING TOOL FOR REF. NO. ⑪: PB205/1.27 (CL150-0066-3)

| | | | | | | |
|-----|------------------|-----------------------------|-----|------------------|-----------------------------|---|
| 4 | DIALYL PHTHALATE | (BLACK) UL94V-0 | 11 | STEEL | NICKEL PLATING | THE WIDTH ACROSS OF A HEXAGON SOCKET: 1.27 |
| 3 | DIALYL PHTHALATE | (BLACK) UL94V-0 | 10 | BRASS | NICKEL PLATING | |
| 2 | COPPER ALLOY | SILVER PLATING 5μm min. | 9 | ZINC ALLOY | MATTE FINISH NICKEL PLATING | |
| 1 | ZINC ALLOY | MATTE FINISH NICKEL PLATING | 8 | ZINC ALLOY | MATTE FINISH NICKEL PLATING | |
| NO. | MATERIAL | FINISH, REMARKS | 7 | BRASS | NICKEL PLATING | |
| NO. | MATERIAL | FINISH, REMARKS | 6 | BERYLLIUM COPPER | NICKEL PLATING | |
| NO. | MATERIAL | FINISH, REMARKS | 5 | BRASS | MATTE FINISH NICKEL PLATING | |
| NO. | MATERIAL | FINISH, REMARKS | NO. | MATERIAL | FINISH, REMARKS | |

| | | | | | | |
|-------------------------------|--|--------------------------------|-----------------------------------|---------------------------------|---------------------------------|----------|
| CODE NO. (OLD) CL | | DRAWN E. Yamino 05.11.28 | DESIGNED G. Yamada 05.11.28 | CHECKED H. Zemba 05.11.30 | APPROVED M. Sato 05.11.30 | RELEASED |
| DRAWING NO. EDC4-112325-71 | | PART NO. RM12BPE-2S(71) | | CODE NO. CL109-0423-0-71 | | |
| SACLE 2 : 1 | | HIROSE ELECTRIC CO., LTD. | | 1 1 | | |

Mouser Electronics

Authorized Distributor

Click to View Pricing, Inventory, Delivery & Lifecycle Information:

[Hirose Electric:](#)

[RM12BPE-2S\(71\)](#)